

Choosing a Secondary School With Your Child



Parent Kit

**Missed our
last issue?**

Click [here](#) for our
previous Parent Kits



Ministry of Education
SINGAPORE

The new PSLE Scoring System will be implemented this year.

Under the Achievement Level (AL) System, there are now only 29 possible PSLE Scores. Schools will also be less differentiated by Cut-Off Points (COPs), which means more secondary school choices for each student.

With more school options available, what should you and your child consider when shortlisting secondary schools?



5 Steps to Help You Choose a Secondary School With Your Child

While your child's PSLE Score is one consideration, it is also important to think about their strengths, interests, abilities, and a school environment that would be a good fit for their overall learning needs.

These factors will affect how well they settle into secondary education and how much they enjoy school over the next few years. Check out the 5 Steps in this issue!



1) Understand your child

Find out more about their strengths, interests, and how they like to learn in primary school.



- Ask them about their favourite lessons, what they enjoy, and how they overcome challenges.
- This will help you understand their strengths, interests, abilities, and the school environment they thrive in.

1) Understand your child

Learn about what they are looking forward to in secondary school, as well as their concerns.

- Share stories of your secondary school days to help them see this new phase as an adventure. Listen to their concerns as they may be worried about making new friends, or managing their time with more subjects.

**CONVO
TIPS**

Start a conversation with your child on how they feel about going to secondary school today!

2) Consider other important factors

**CONVO
TIPS**

Involve your child in early preparations by helping them consider the following factors that would directly impact their school experience.

A. School Culture and Environment

- What school culture (e.g. school vision, mission, motto) and values will suit your child? Are they aligned with your family values?



2) Consider other important factors

B. Programmes, Subjects and CCAs Offered

- What are the school programmes (e.g. Applied Learning Programme, Learning for Life Programme, Language Elective Programmes) that are aligned to your child's strengths and interests?
- What CCAs do they look forward to participating in? What activities do they want to participate in?



2) Consider other important factors

C. Location and Transportation

- What is a comfortable travelling distance for your child? How will they be travelling to school, and is the mode of transport sustainable?
- Travelling time will affect the amount of time they have for after-school activities and rest.



3) Shortlist a range of schools

CONVO
TIPS

After getting an understanding of your child's strengths and interests, have a chat about the types of school to shortlist.



To find suitable secondary schools with your child based on the important factors and what the schools have to offer, check out [SchoolFinder](#) or [MySkillsFuture Student Portal!](#)



3) Shortlist a range of schools

- 1 Take time to find out more about the possible school choices with your child to help both of you understand the key aspects each school can offer.
- 2 Use all 6 secondary school options so that your child is more likely to get into a school of choice.
- 3 Reference schools' indicative PSLE Score ranges* as a guide and include 2 to 3 schools where your child's PSLE Score is better than the schools' Cut-Off Points.

**Note that schools' PSLE Score ranges may vary from year to year, as they depend on each cohort's performance and choice patterns.*

3) Shortlist a range of schools

Here are some useful tools to check out:



Use the [PSLE Score Calculator](#) to generate an indicative PSLE Score for your child. Find out what courses and schools they may be eligible for.



Visit [Virtual Open Houses](#) with your child to get a "feel" of the school before making a decision.

4) Join our upcoming webinar

Learn how to choose a secondary school with your child, and help them transit smoothly into a secondary school environment at our webinar on 'Preparing Your Child for Secondary School Education'.

Date: 12 or 19 June 2021 (Saturday)

Time: 10am to 12pm

Venue: Held virtually on Zoom



[Click here to Register!](#)

Only successful registrants will receive a confirmation email.

Priority will be given to parents of P6 children.

5) Check out our resources

On the new PSLE Scoring and Secondary 1 Posting systems:

- [PSLE-FSBB Microsite](#)
- [SchoolFinder How-to-Guide](#)
- [PSLE Score Calculator How-to-Guide](#)

On having conversations about your child's aspirations:

- [Journeying With Our Children, Supporting Their Aspirations](#)

On transition support and building resilience:

- [What's Next after PSLE](#)
- [Resilience Boosters](#)
- [Transition Tips](#)

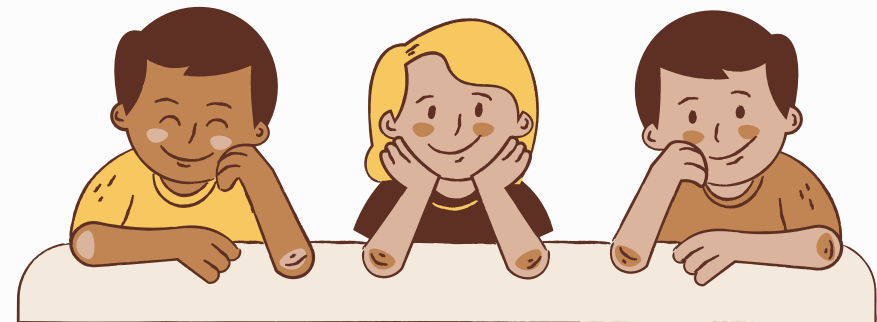
When your child looks back at their school life in the future, what do you want them to remember fondly?

When we look beyond their academic results to learn more about what they want to achieve in their future school, we can shortlist schools that will enrich their schooling experience.

Parent Kit

Have thoughts on this issue you would like to share?

Let us know [here](#)!



We want to share more than parenting tips with you.

Check out our Instagram page for parents to **connect** and **celebrate** the ups and downs of parenting, **share** tips and stories on the parenting experience, and **grow together**.

Follow us **@parentingwith.moesg** on Instagram!

